

# SATURNUS

65M FAST DISPLACEMENT



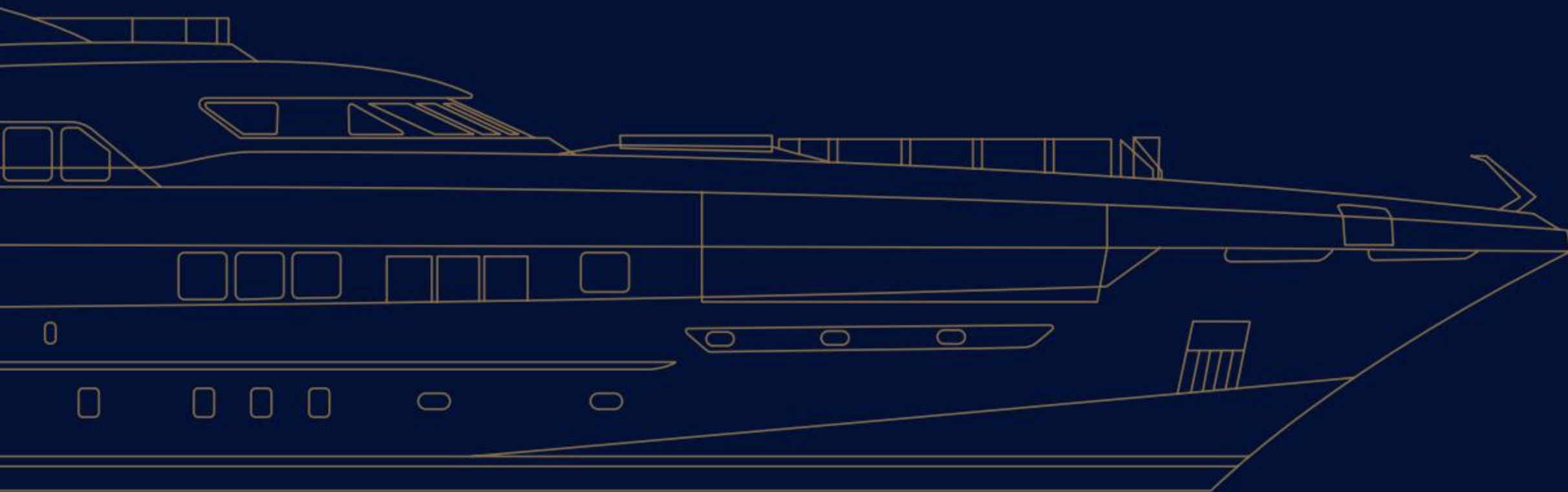






# SATURNUS

65M FAST DISPLACEMENT











# SATURNUS

---

Saturnus is a 65-metre yacht with a Fast Displacement Hull Form. As a result, she has achieved what was considered impossible when thinking along conventional lines. Fortunately, Heesen does not. In a world where a 5 per cent gain is considered a triumph, this hull is more efficient than any other yet tested.









## STAGGERING DECK SPACE

---

Leave aside the technical and enjoy the lifestyle. Deck space is staggering with over 267 square metre on her three upper decks. The foredeck is both a helipad and sun terrace set over gull wing doors that open to reveal a full-beam tender garage.





## CUTTING EDGE

---

Saturnus has a top speed of over 28 knots but uses less fuel than conventional yachts. Performance and efficiency have seldom been more successfully combined. A range of 4,000 miles at 14 knots and the highest power to weight ratio of any comparable yacht, make her a cutting edge example of Heesen's innovative naval architecture.



## A RESORT BY THE SEA

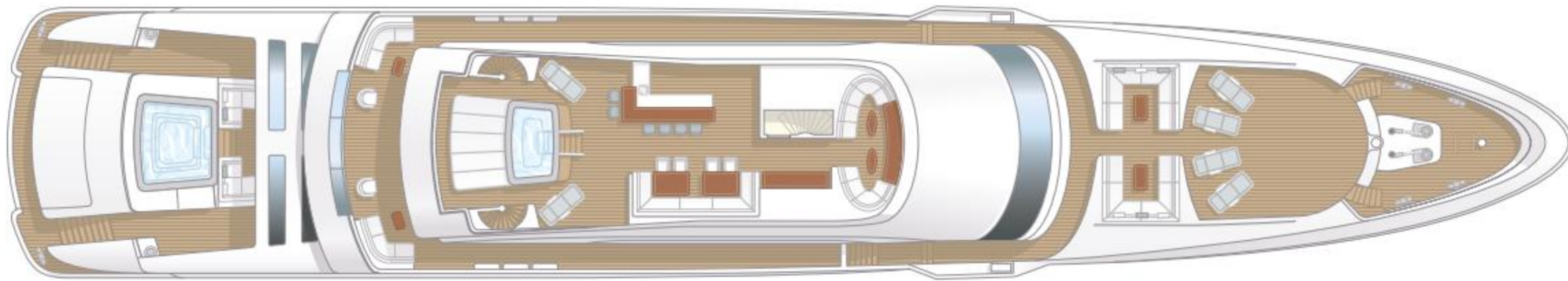
---

Beach club or private resort? The side platform measures over 10 square metres, perfect for two sunbeds and a drinks table. The swimming platform is 22 square metres, ideal for four more guests to relax. Inside is the beach club's 77 square metre air-conditioned lounge including comfortable sofas, fully stocked bar, a sauna and a large plasma screen.



# DECKS

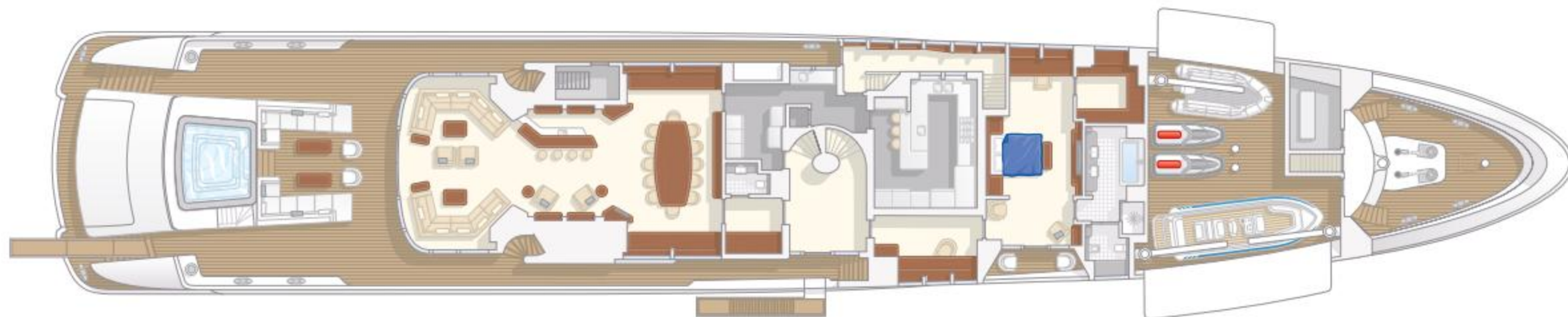
## SUN DECK



## UPPER DECK



## MAIN DECK



## LOWER DECK

# SPECIFICATIONS

## SATURNUS 65M FAST DISPLACEMENT

|                  |   |
|------------------|---|
| Hull type:       | Twin propeller, round bilge,<br>Fast Displacement Hull Form                         |
| Naval architect: | Van Oossanen / Heesen Yachts  |
| Exterior design: | Omega Architects  |
| Interior design: | To be decided   |
| Classification:  | ABS ✱ A1 Commercial Yachting Service ✱ AMS<br>Large Commercial Yacht Code LY3 / MCA |
| Hull:            | Aluminium   |
| Superstructure:  | Aluminium   |

### DIMENSIONS

|                           |                                  |
|---------------------------|----------------------------------|
| Length over all:          | 65.00 metres / 213 feet 3 inches |
| Beam over all:            | 10.90 metres / 35 feet 9 inches  |
| Draft:                    | 3,10 metres / 10 feet 2 inches   |
| Displacement (half load): | Approx. 560 tons                 |

### ACCOMMODATION

|         |   |
|---------|---|
| Guests: | 12  |
| Crew:   | 11  |
| Cabins: | Full-beam Owner's stateroom,<br>VIP cabin, four double guest cabins |



### TECHNICAL DETAILS

|                            |                                   |
|----------------------------|-----------------------------------|
| Maximum speed (half load): | 24.5 knots                        |
| Range at 14 knots:         | 4,000Nm                           |
| Fuel capacity:             | 90,000 litres / 23,775 US Gallons |
| Fresh water:               | 30,000 litres / 7,925 US Gallons  |

### PROPULSION DETAILS

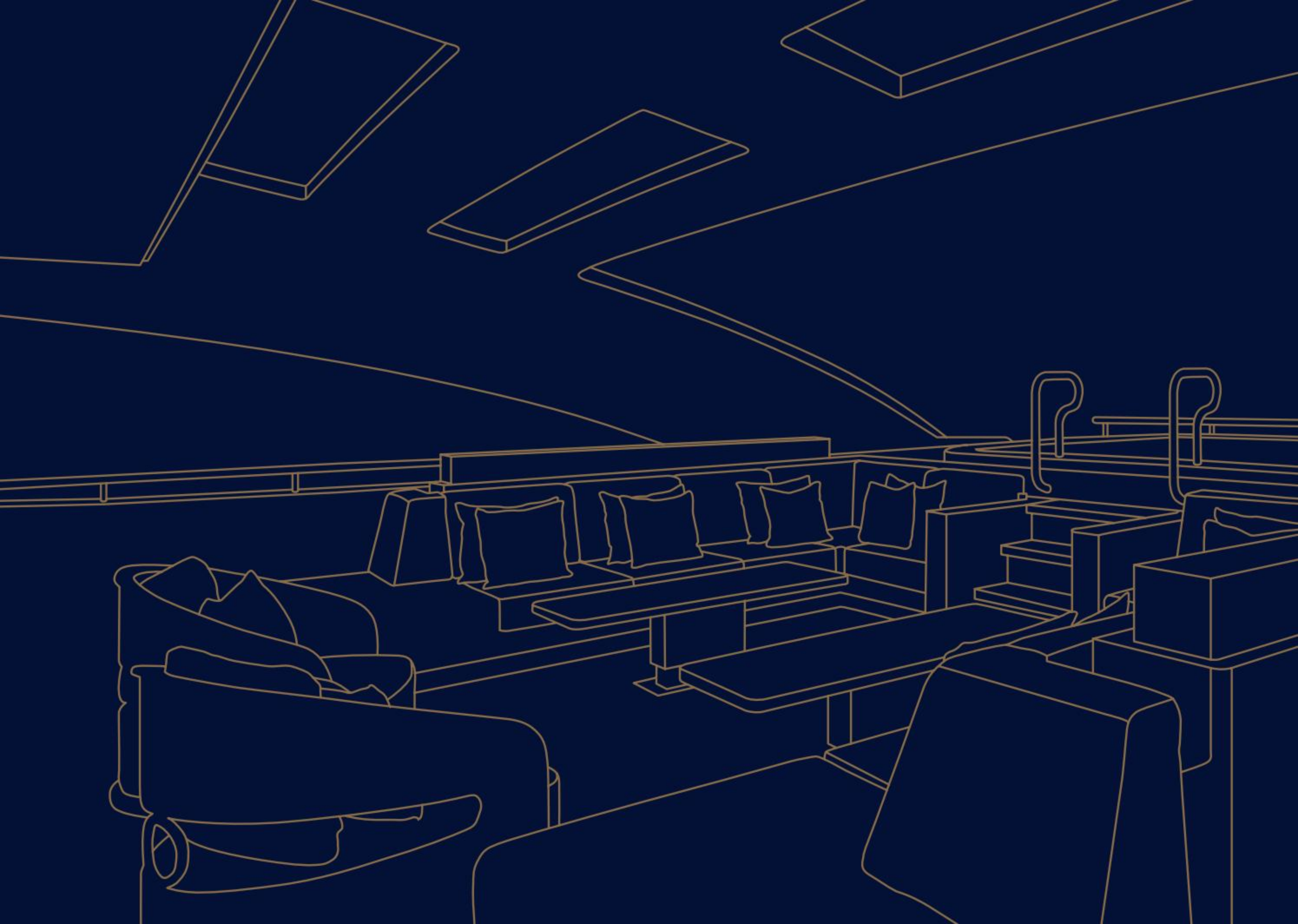
|                  |  |
|------------------|--|
| Main engines:    | 2 x MTU 16V 4000 M93L                      |
| Maximum power:   | 2 x 3,440kW                                |
| Gearbox:         | 2 x ZF 9350                                |
| Engine control:  | MTU Blue Vision                            |
| Propeller:       | Schaffran five blade fixed pitch Ø 2,000mm |
| Main generators: | 2 x Zenoro, each 200kW                     |
| Bowthruster:     | HRP 165kW, electrically driven             |
| Stabilisers:     | Quantum extendable, 2 fins, zero speed     |

© Heesen Yachts 2016. This brochure has been prepared for general marketing purposes. The information contained in this brochure (including without limitation any information concerning the dimensions, capabilities and performance characteristics of the subject yacht) is given in good faith but is not warranted to be accurate. All such information is subject to change at any time without notice. Heesen Yachts gives no warranty or representation, nor shall it be liable, in contract, tort or any other way, for any claims relating to or arising from any use made of any such information.





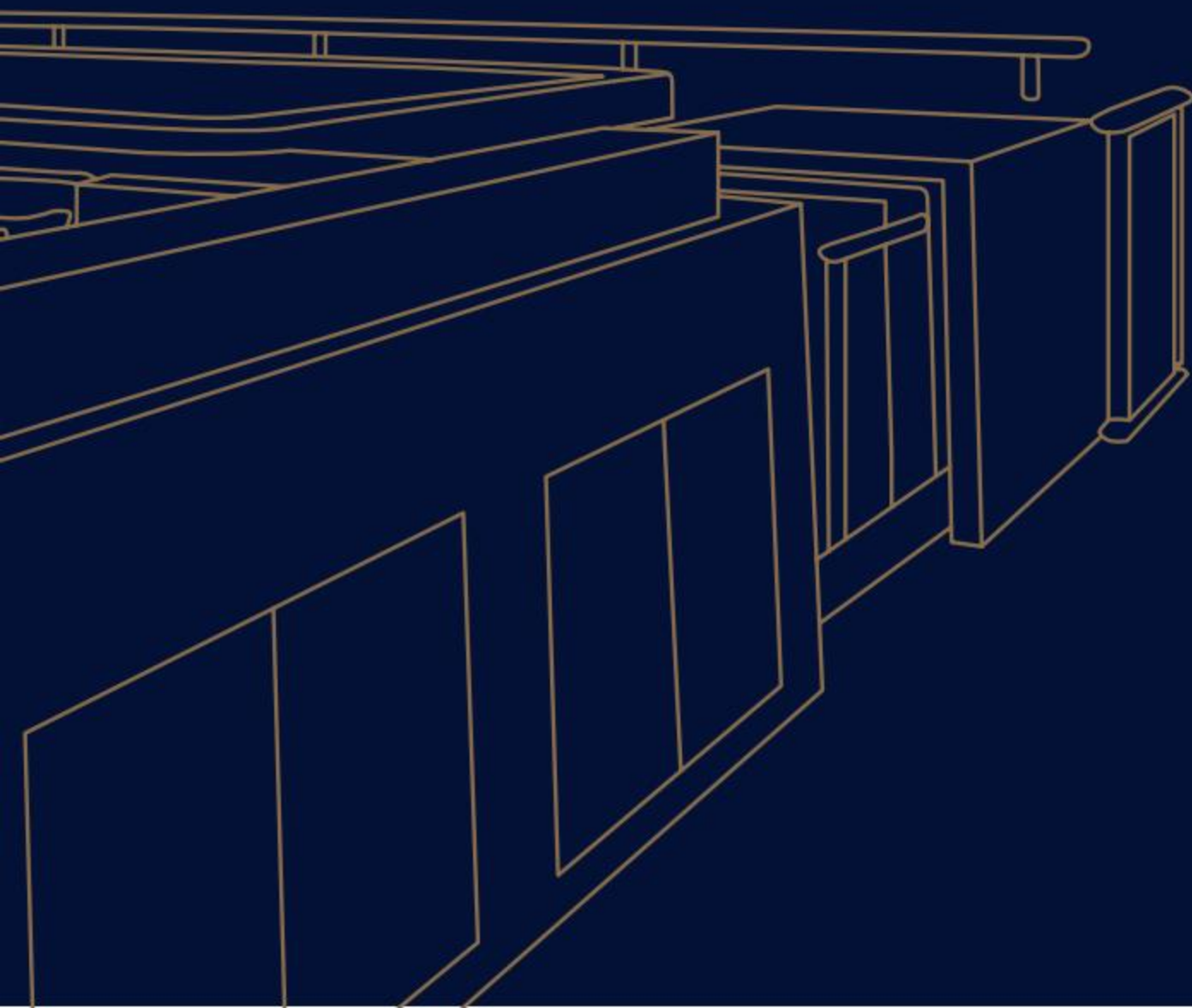






# CUSTOM INTERIOR DESIGN

INSPIRATION











## PERSONAL & LUXURIOUS

---

**MAIN SALOON** | Welcome to the main saloon where almost everything is possible. Heesen Yachts gives owners full control over envisioning their home away from home. By using only the best materials available, the yacht's interior design concept will pay homage to the owner's unique lifestyle. Premium leathers, natural stone, marbles and exotic woods may be selected to create a luxurious environment that superbly complements the yacht's exterior.

## DINING WITH A VIEW

---

**MAIN SALOON DINING** | At Heesen Yachts, we continuously strive to redefine the standards of yacht building. The same holds true for the interior of our super yachts. The decorative style of the dining area features premium furnishings to ensure supreme comfort. It goes without saying that owners are free to explore the numerous possibilities to achieve the sophisticated elegance desired. Traditional, contemporary or avant-garde, the owner is at the helm.













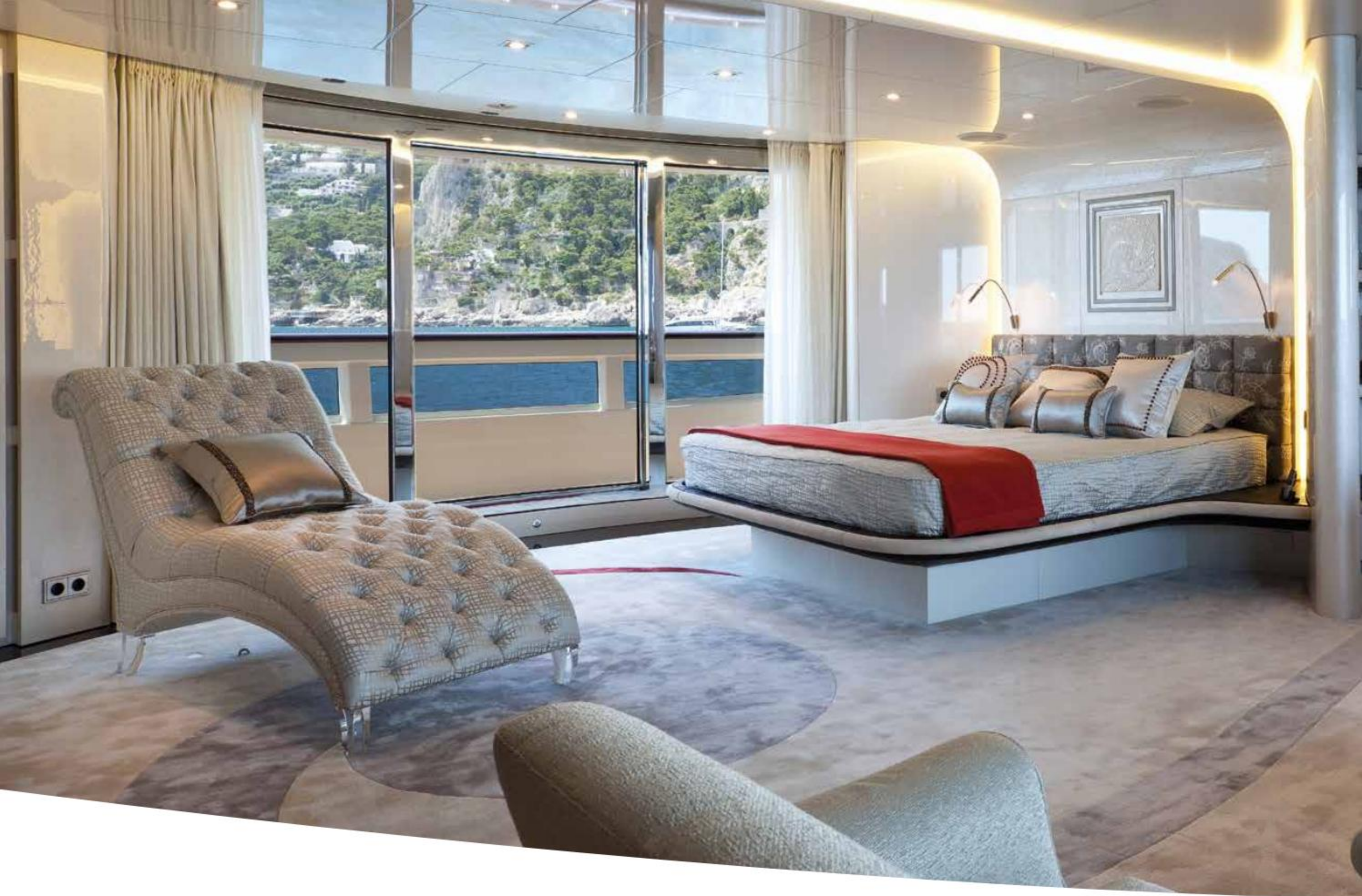


## PERSONALISED DECOR

---

**SKY LOUNGE** | When travelling with a Heesen yacht, the world is your oyster. The freedom to go wherever, whenever is reflected by the fully customisable sky lounge, forming the link between interior, exterior and the stunning surroundings. Working with renowned interior designers leaves plenty of scope to create a signature lounge area beyond belief. Therefore Heesen is not just a yacht builder. We're in the business of fulfilling dreams.









## MAGNIFICENT & SECLUDED

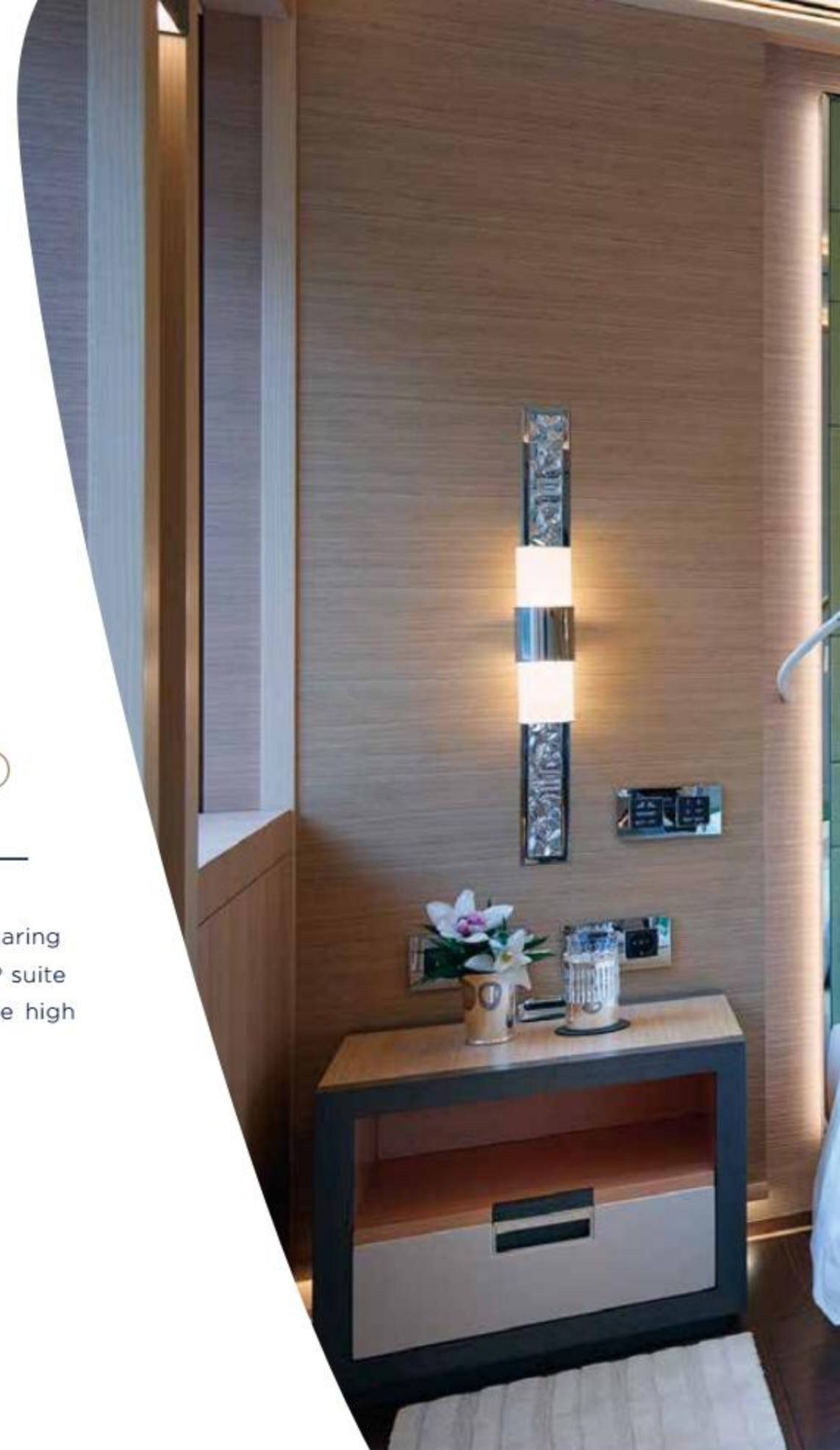
**OWNER'S STATEROOM** | When unsurpassed luxury, guaranteed privacy and spacious comfort are of the essence, the owner of any Heesen yacht will feel at home. The Owner's stateroom can be designed to your every wish, leaving nothing to chance. This means a perfect synthesis of familiar luxury, surprising features and the finest materials. Whether a modern, sophisticated atmosphere or a warm, more traditional ambiance is desired, expect to be more than amazed by the numerous options.



## PEACEFUL AND FULLY EQUIPPED

---

**VIP SUITE** | The only thing that makes enjoying a Heesen super yacht even more unforgettable is sharing the experience with family, friends and acquaintances. To ensure peace, privacy and comfort, the VIP suite is located on a separate deck. Owners have full control over the interior design to perfectly fit the high standards of their VIPs. A unique display of hospitality and sense of style.













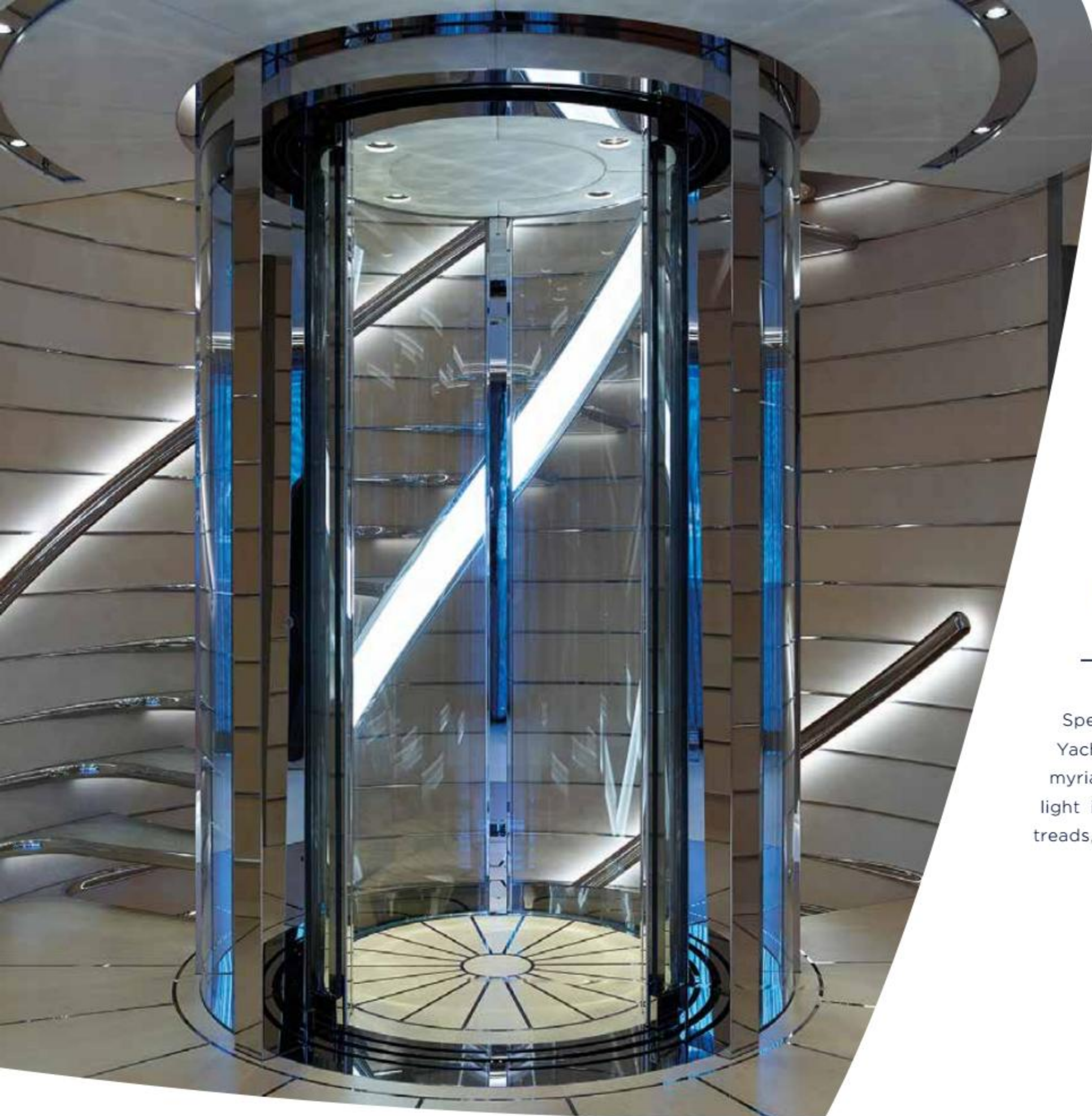


## ELEGANT & COMFORTABLE

---

**GUEST SUITES** | Smaller in terms of square metres, the guest accommodation nevertheless provides a magnificent opportunity to set new design standards. Owners can fine-tune the comfort and feeling of the interior of every single suite to perfection. Each suite also features a private en-suite bathroom where nothing is left to be desired. Not only in terms of luxury but also in terms of the broad range of design options to choose from.





## ELEVATOR

---

Spectacular staircases are a hallmark of Heesen Yachts: we will take it to another level with a myriad of intricate bespoke details and elaborate light installations embedded into the walls, stair treads, ceiling and floor.



## ELEVATOR

---

The staircase wraps around a glass and steel elevator connecting all internal levels of the yacht.











## BEACHCLUB

---

The lower deck of the duplex beach club – the perfect place to meet and greet friends arriving by tender.











## WORLD LEADER IN ALUMINIUM & WORLD CLASS STEEL

---

Our philosophy has evolved over 35 years and the experience we have gained is unlike any other yacht builder in the world. We build in steel and aluminium to enormously demanding tolerances. Our undying passion is luxury performance and Heesen is recognised as the world leader in aluminium construction, and world class in steel yachts.















## CRAFTSMANSHIP

---

We are not just yacht builders; we are also builders of dreams. We owe it to our clients to exceed their expectations, so we push our boundaries every day without compromise. This commitment, combined with outstanding after-sales service, allows our owners to enjoy their yachts to the fullest. This is the way it has always been, ever since Frans Heesen founded the company in 1978 and we first began creating yachts beyond belief.





## CUSTOM DESIGN

---

Overcoming challenges has always driven our spirit of innovation & design. Every single yacht can be custom-built and we focus on making your aesthetic or technical challenge work in reality. Taking your yacht dreams beyond anything you imagined possible. We can discuss your project at our shipyard in Holland, at our local offices in Russia, China, South East Asia and United Arab Emirates, or anywhere else in the world.













## BUILT ENTIRELY IN-HOUSE

---

All of our yachts are engineered by master craftsmen in the nine sheds at our shipyard in Oss. Renowned for their innovative engineering and exceptional speed, range, stability and comfort, we build them entirely in-house out of the hardest steel and the strongest aluminium. Moreover, Heesen is one of the very few shipbuilders to have an in-house department of interior specialists working to the highest standards.



# HOLLAND, HOME OF YACHT BUILDING

---

It is no coincidence that many of the best shipyards in the world are found in Holland. Our passion for yacht building and commitment to quality is unrivalled. And that is what makes Heesen Yachts the world's leading builder of high-performance yachts. We hope to see you soon to realize your dream.















Rijnstraat 2 | 5347 KL Oss | The Netherlands

t + 31 412 66 55 44 | f +31 412 66 55 66 | [sales@heesenyachts.com](mailto:sales@heesenyachts.com)

**HEESEN**[YACHTS.COM](http://HEESEN.YACHTS.COM)



